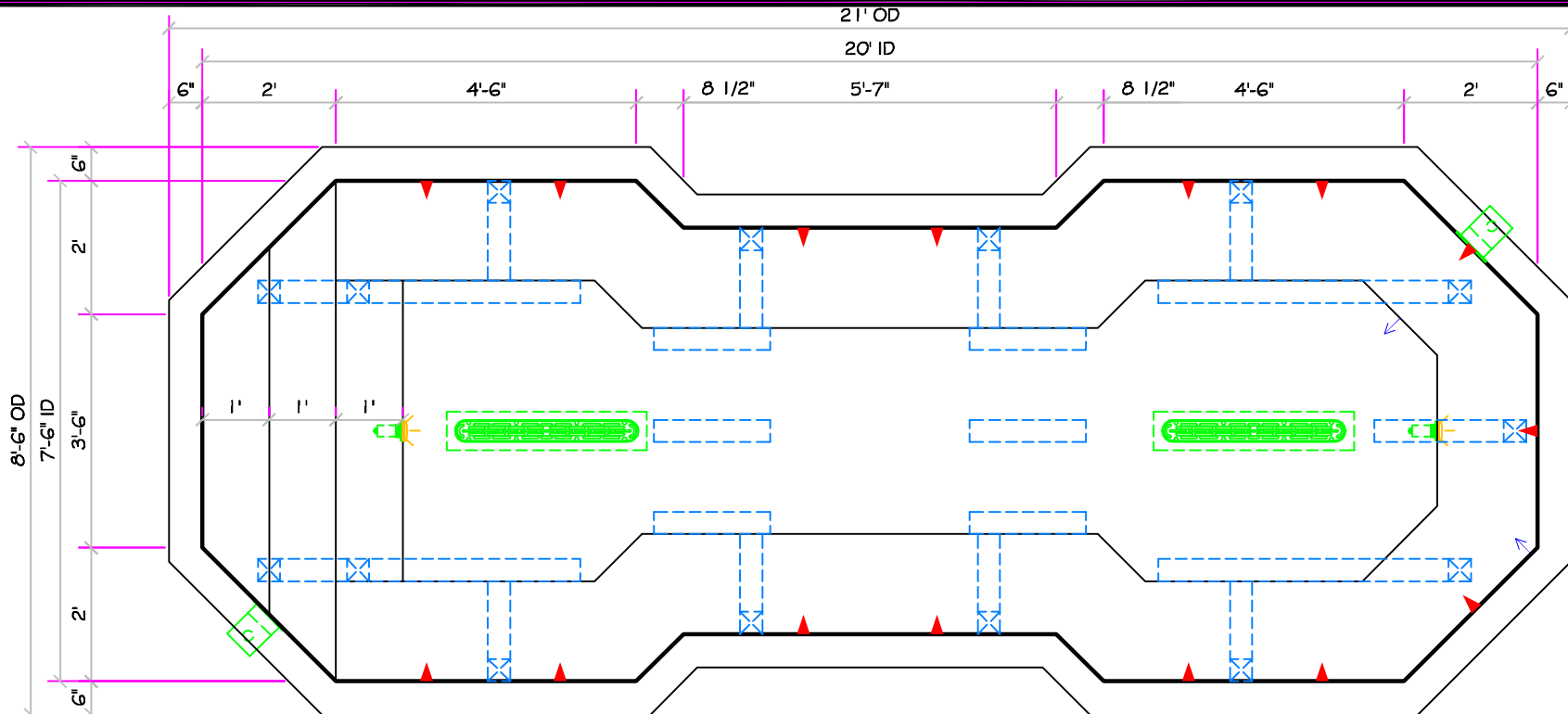
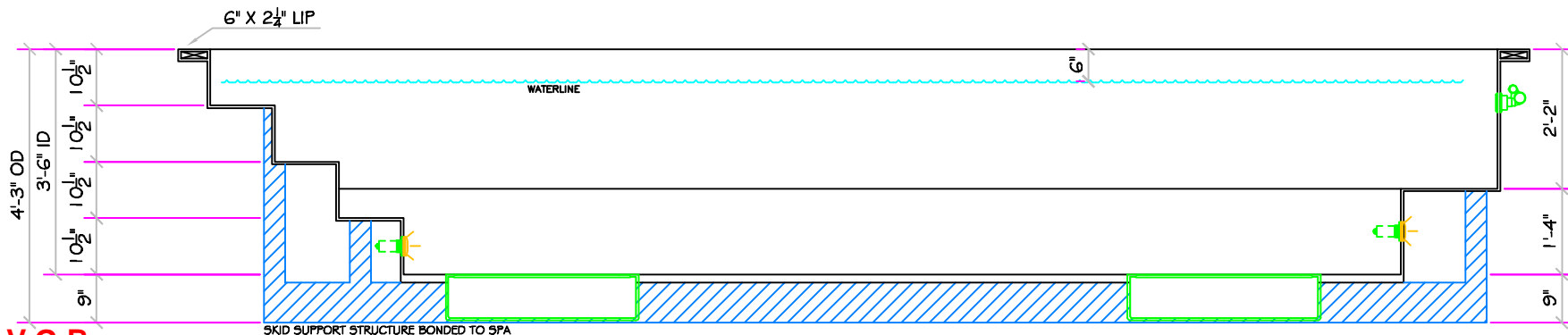


SPECIFICATIONS	
DRY WEIGHT:	3600 LBS.
TOTAL WEIGHT:	25988 LBS.
WATER VOLUME:	2685 GAL.
WATER VOLUME:	359 Cu.Ft.
WEIGHT:	22388 LBS.
SURFACE AREA:	133 SQ. FT.
IAPMO#:	1138
FDA#:	2030305

SKID SUPPORT STRUCTURE BONDED TO SPA	
	*SKIDS SUPPLIED BY NESPA
LIGHT NICHE	
	PAL 2000 LV LIGHT, 12 VOLT 50 WATT, UL APPROVED
SKIMMER	
	FRONT ACCESS SKIMMER, NSF APPROVED
MAIN DRAIN	
	AguaStar 32CDFLFR, 32" Channel Drain, Approved Max. Flow Rate/Floor = 236 GPM @ 3.4 fpm, Wall = 136 GPM @ 1.9 fpm, V.G.B Approved Safety Drain
JET	
	HYDRO INLETS, 1-1/2" WATER - 1-1/2" AIR, HYDROAIR #10-5100, COMPLIES W/ ANSI CODE ASME A112.19.8-07, UL APPROVED
RETURN	
	INLET FITTINGS, 1-1/2" WALL TYPE W/EYEBALL, HYDROAIR #10-3500, COMPLIES W/ ANSI CODE ASME A112.19.8-07, UL APPROVED
FILL	
	INLET FITTINGS, 1-1/2" WALL TYPE W/EYEBALL, HYDROAIR #10-3500, COMPLIES W/ ANSI CODE ASME A112.19.8-07, UL APPROVED



**20' RENAISSANCE
(SWIM SPA)
ALL TILED SPA**



*** Complies with V.G.B.**

Pool and Spa Safety Act *ALL DIMENSIONS SUBJECT TO 1/4" TOLERANCES*

Oct 30, 2009 - 9:57am

These drawings, concepts, and details contained herein are the original proprietary designs of NESPA ENTERPRISES, developed over many years of experience in the pool and spa industry and as such are protected by the copyright laws of the United States Government. Reproduction of any of the above without written permission to do so by NESPA ENTERPRISES, is illegal.

NESPA ENTERPRISES INC.
2800 Richter Ave. Ste. C Oroville, CA 95966
Office: (530) 534-9910 Fax: (530) 534-9915
E-Mail: sales@tiledspas.com Web Site: www.tiledspas.com



SIZE A	DWG NAME NESPA_RESIDENTIAL_MODELS	DWG TYPE SD1
SCALE 3/8" = 1'	DATE 10/30/2009	SHEET PAGE 1 OF 1